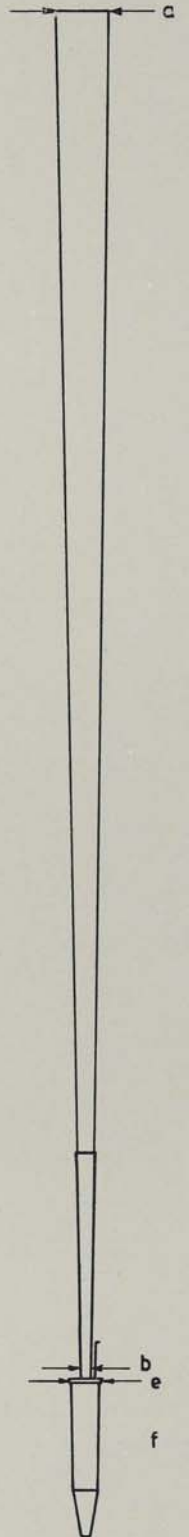


Trompete 8'

Bauform	konisch, offen
Structure	conical, open
Charakter	hell, nicht stark, obertönig
Character	bright, not loud, harmonious
Kehlen	Nr. 11
Shallots	No. 11
Verwendung	für kleinere Orgeln, als Horizontal-Trompete auch in mittleren Orgeln
Application	for smaller organs, also as chamade in medium-sized organs

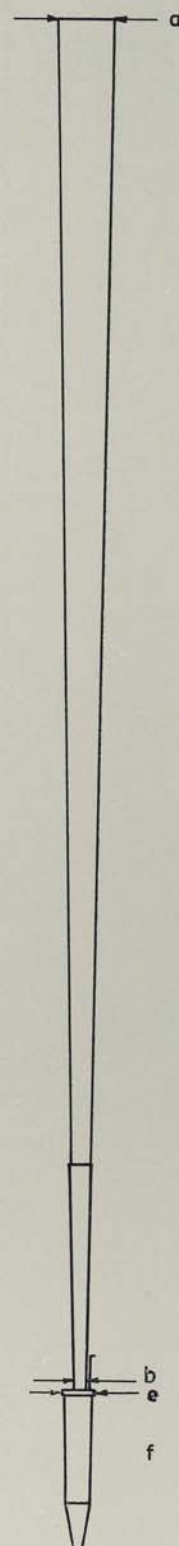
	a	b	c	d	e	f	g	h
C	74 82	18			52	240	2140	2380
c	63	14			49	220	1050	1270
c'	52	11			44	200	515	715
c''	40	9			37	200	255	455
c'''	38	8			31	200	120	320

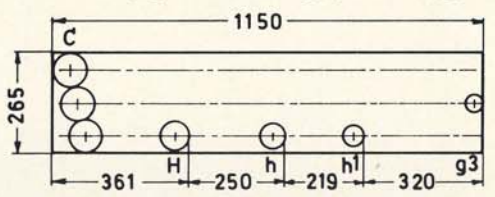
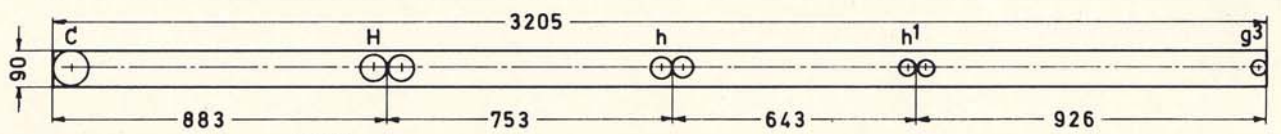
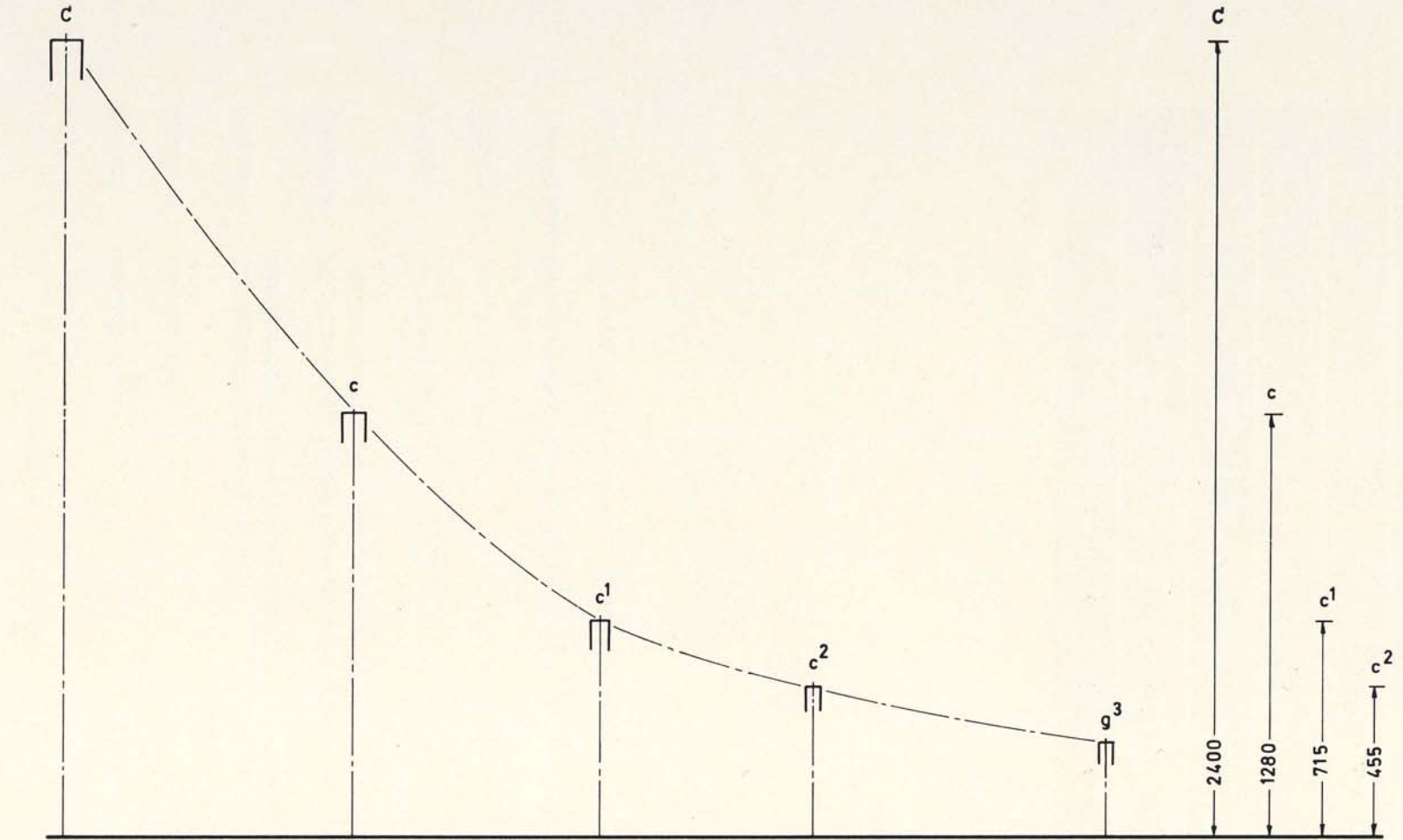


Trompete 8'

Bauform	konisch, offen
Structure	conical, open
Charakter	hell, leuchtend, Mittellage betont alternativ: Baß- und Mittellage besonders mischfähig
Character	bright, beaming, middle register emphasized alternative: bass and middle register particularly blending
Kehlen	Nr. 11 oder Nr. 10
Shallots	No. 11 or No. 10
Verwendung	für kleinere bis mittlere Orgeln im HW
Application	for smaller to medium-sized organs in Great

	a	b	c	d	e	f	g	h
C	86	18			52	240	2160	2400
c	63	14			49	220	1060	1280
c'	52	11			44	200	515	715
c''	45	9			37	200	255	455
c'''	42	8			31	200	120	320

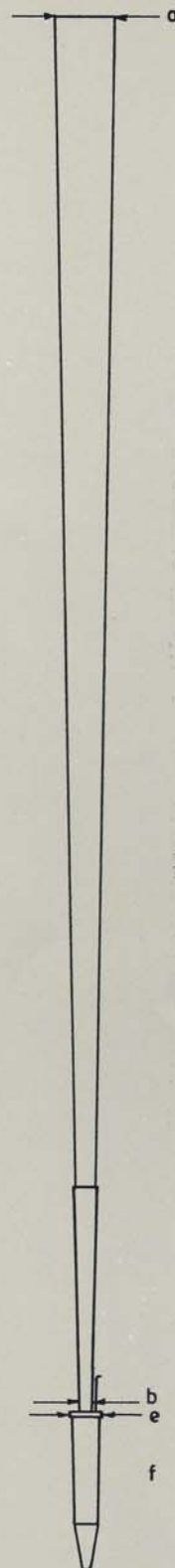




Trompete 8'

- Bauform** konisch, offen
- Structure** conical, open
- Charakter** hell, kräftig, tragend, mischfähig
- Character** bright, strong, supporting, blending
- Kehlen** Nr. 11 oder Nr. 10 für HW, Nr. 9 für Ped.
- Shallots** No. 11 or No. 10 for Great, Nr. 9 for Ped.
- Verwendung** a) für mittlere und größere Orgeln im HW
b) für kleinere Orgeln im Ped.
- Application** a) for medium-sized and bigger organs in Great
b) for smaller organs in Ped.

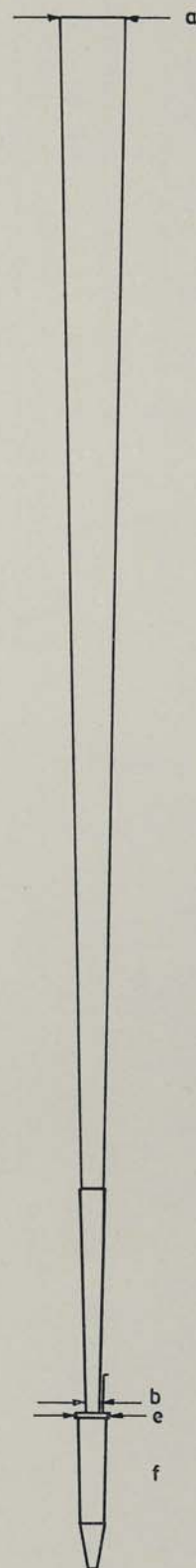
	a	b	c	d	e	f	g	h
C	94	17			52	240	2210	2450
c	73	14			49	220	1090	1310
c'	60	11			44	200	520	720
c''	48	10			37	200	250	450
c'''	45	9			31	200	115	315

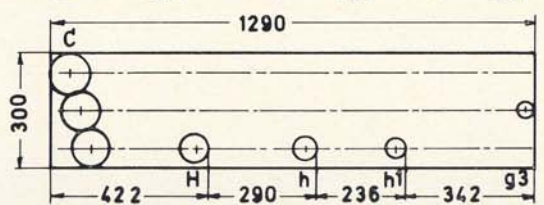
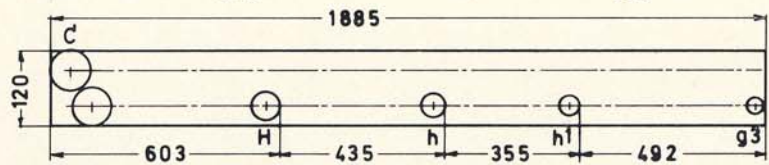
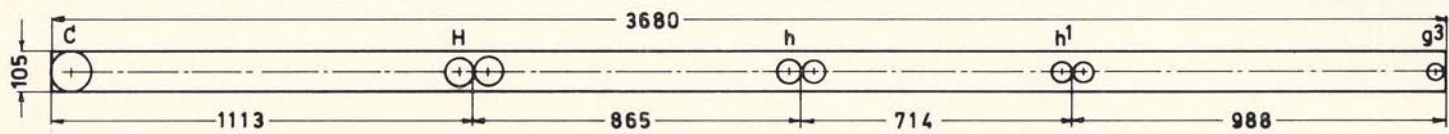
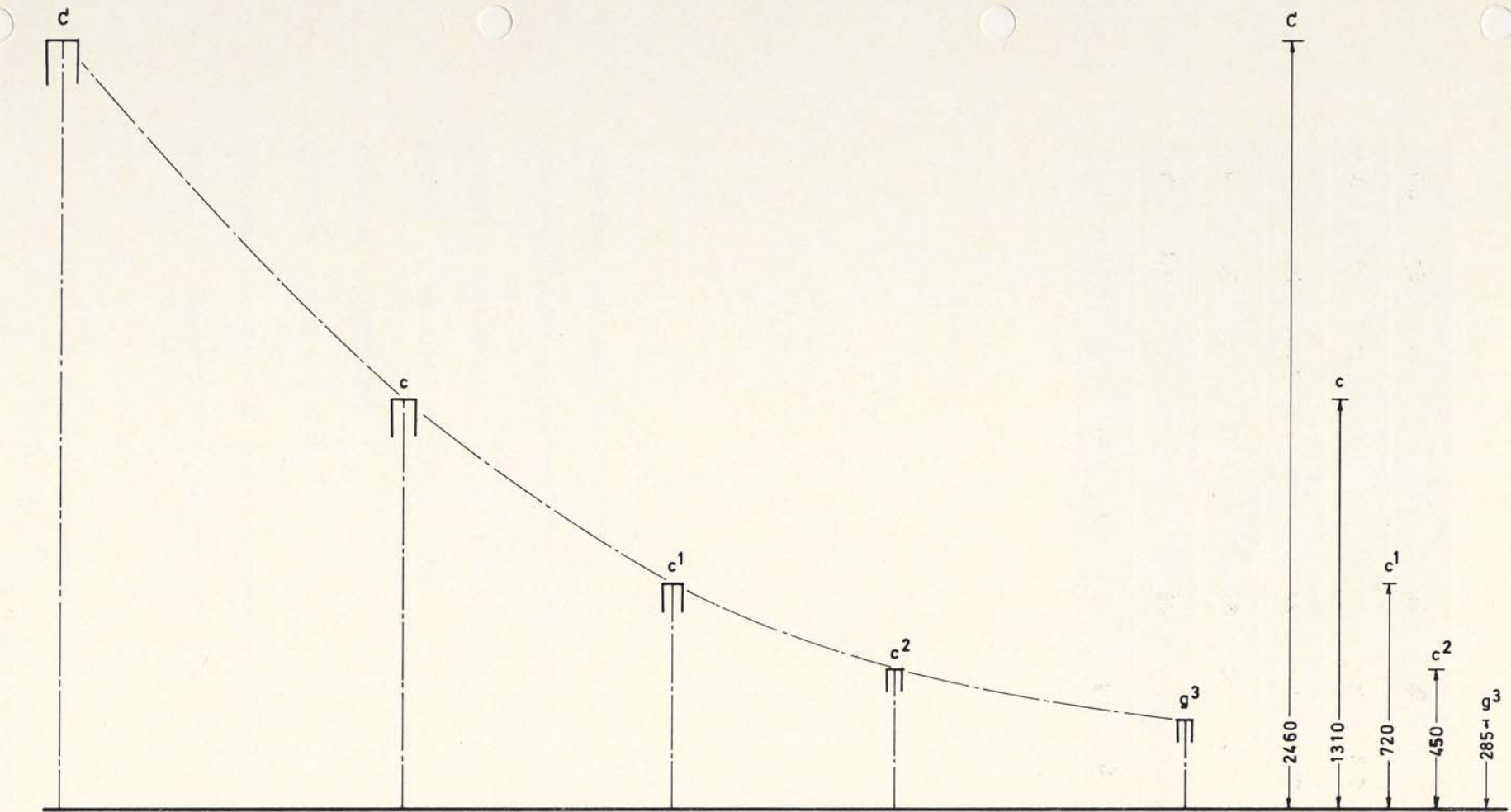


Trompete 8'

- Bauform** konisch, offen, im Diskant evtl. überblasend
- Structure** conical, open, in the treble possibly harmonic length
- Charakter** füllig, mischfähig
- Character** full, blending
- Kehlen** Nr. 10 oder Nr. 8, Nr. 9 für Ped.
- Shallots** No. 10 or No. 8, No. 9 for Ped.
- Verwendung** große HW Trompete, auch SW oder Ped.
- Application** big trumpet for Great, also for Swell or Ped.

	a	b	c	d	e	f	g	h
C	100	19			52	240	2220	2460
c	75	15			49	220	1090	1310
c'	60	13,5			44	200	520	720
c''	48	11			47	200	250	450
c'''	45	10			31	200	115	315

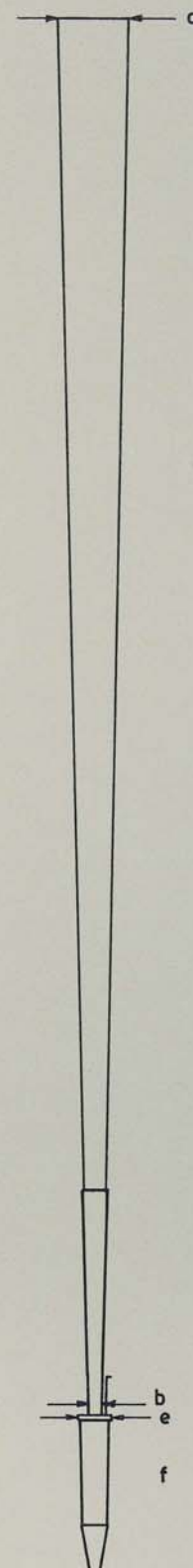




Trompete 8'

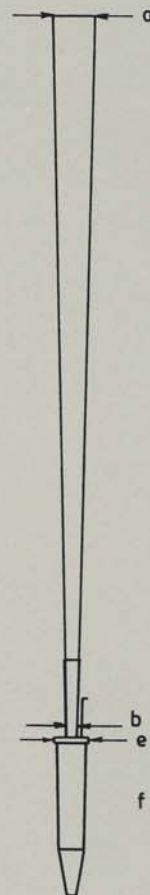
Bauform	konisch, offen
Structure	conical, open
Charakter	sehr füllig, abgerundet, wachsend
Character	very full, rounded, increasing
Kehlen	Nr. 8
Shallots	No. 8
Verwendung	große Ped.-Trompete
Application	big trumpet for Ped.

	a	b	c	d	e	f	g	h
C	110	20			52	240	2220	2460
c	88	16			49	220	1090	1310
c'	70	13			44	200	535	735



Trompete 8'

Bauform	konisch, offen	C-A halbe Länge, bis a° möglich
Structure	conical, open	C-A ≠ half length, possible to a°
Charakter	sehr scharf, obertönig, nicht tragend	
Character	very biting, harmonious, not supporting	
Kehlen	Nr. 13	
Shallots	No. 13	
Verwendung	für RP oder BW	
Application	for Positive or Brustwerk	



	a	b	c	d	e	f	g	h
C	65	14			52	240	1130	1370
A	57					200	650	850
B (A ≠)	56					200	1195	1395
c	55	12			44	200	1060	1260
c'	52	10			37	200	515	715
c''	40	9			31	200	255	455
c'''	38	8			31	200	120	320

